

Wallaroo Historical Walking Trail



11. Globe Inn 1861
Built as the single storey Globe Inn, later known as the Globe Hotel, with Mr W. Square as the first licensee. The name was changed to the

Weeroona Hotel in 1959.



12. Police Station & Residence 1862

The small police station on the corner of Thomas Street and John Terrace was erected by David Bower in 1862 at a cost of 1,075 pounds. In

1865 the Police Sergeant's residence fronting John Terrace was erected with 4 stone cells and stables at the rear. A new Police Station was erected alongside in the 1940s and closed in 1972



13. Court House 1865

The Wallaroo Court House was built in 1865. Many sailors, miners and others were put on trial here for various offences, such as

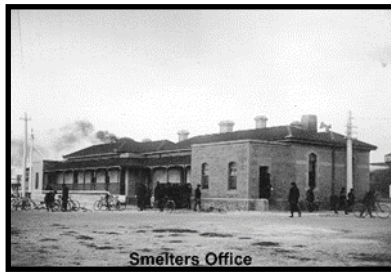
murder and assault. The building is now used by the Kadina, Wallaroo & Moonta Band.



14. Customs House 1862

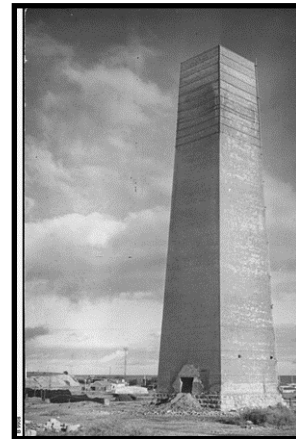
The Custom's House, completed in 1862, was the original Harbour Master's Custom house, and is now on the Heritage List.

Now a private residence.



15. Copper Smelters Office c1880

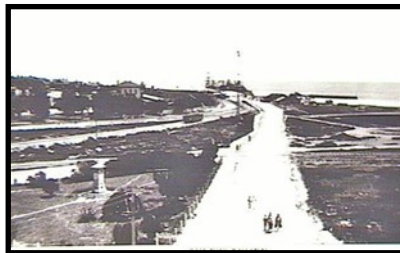
Circa 1880 this building was erected for use as administrative offices for the Smelters by the Wallaroo Mining Company and gave its name to the nearby Office Beach. Presently 'The Smelters Heritage Accommodation'.—a seafront holiday experience.



16. Hughes Chimney Stack

This is all that remains above ground to remind us of the many chimneys and furnaces erected by the Wallaroo Mining and Smelting Company. There are substantial below ground remains of flues, ducts, footings and retaining walls etc. The inscription 'W.W.H. 1861' on the land side commemorates the founder of the company, Sir Walter Watson Hughes. This stack which was the largest of

what were 12 chimneys, stands 130 ft. high and contains over 300,000 bricks.



17. Bews Square 1895

Located opposite the Museum, the memorial in this park was erected in 1895 in memory of David Bews M.P., a local man who

was responsible for bringing reticulated water to Wallaroo from the Beetaloo Reservoir in 1890. Prior to this, water was obtained from underground storage tanks or wells and was always in short supply during summer months.



*All historical photos in this brochure supplied by:
Wallaroo Heritage and Nautical Museum*



1. Old Post Office 1865

Built as the original Post Office for Wallaroo (1865 - 1910). In later years it was used as the Divisional Headquarters

of the Police Department for Yorke Peninsula. In 1975 it was vacated by the Police and is now operated by the Wallaroo Branch of the National Trust of S.A. as the Wallaroo Heritage and Nautical Museum.



2. Old Bond Store 1864

This large building was erected in 1864 and traded as "W.C. Eland's Wallaroo Bonded Stores, which sold wine, spirits, tobacco and other ship's stores. In 1883 the building was converted for use as a Salvation Army Hall which continued until closure in 1971.



3. Cornucopia Hotel 1862

This hotel was built in 1862 and Mr R. Hazelgrove was the first licensee. It was used for many public meetings until the Institute was erected in 1873. The name changed to the Copper Coast Hotel in 2017.



4. Town Hall 1902

Towards the end of the 19th century the towns people decided that a Town Hall was needed. On 31st January, 1901, construction began and in 1902, the building was

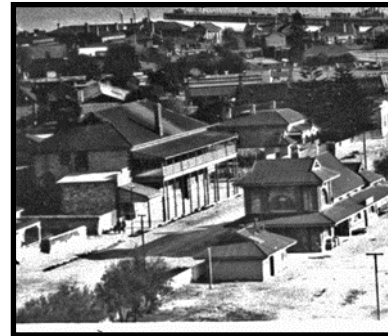
completed and duly opened. However, on 26th December 1917 a disastrous fire destroyed almost everything except the outer walls. The building was quickly restored in 1918 with the addition of a clock tower to house the Town Clock donated by Councillor Richard Tonkin. The Town Hall is noted for its beautiful ornate ceiling and stage proscenium.



5. Railway Station 1914

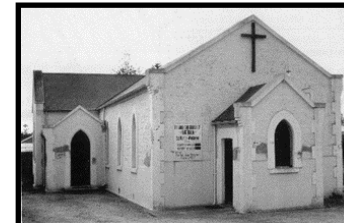
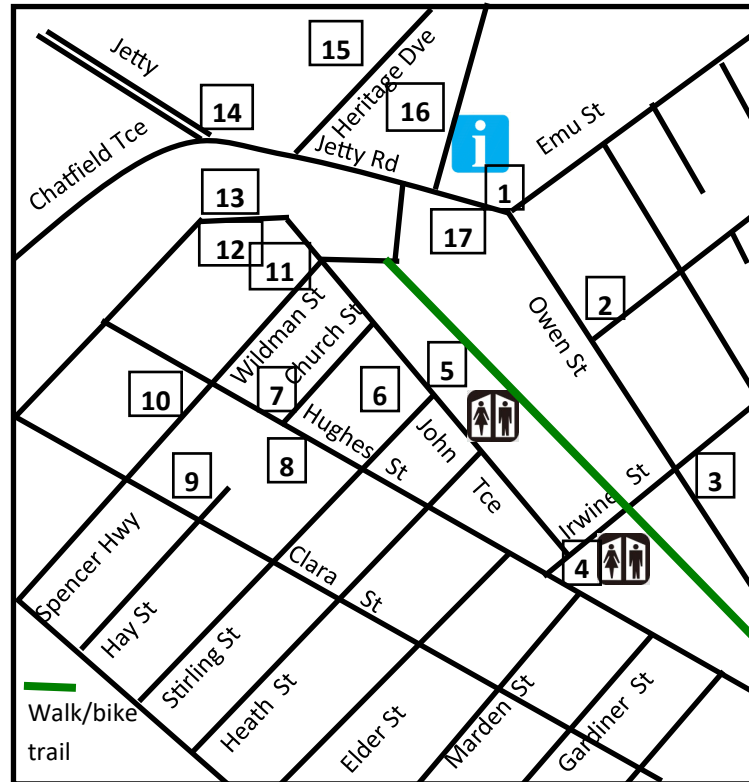
Opened to replace 2 out-dated stations in other parts of the rail yards, it was used as the passenger station until

1969. It was also used as an Art and Craft Centre from 1970-1985. The building was restored in 1985 and converted for operation as the Railway Restaurant and Conference Centre. Currently used by the Copper Coast Council and local Community Library.



6. Sonbern Lodge Motel 1914

Built as a Coffee Palace and Guest Hotel to coincide with the opening of the Railway Station. It has been lovingly restored in early 1900s style.



7. ST. Mary's Anglican Church 1864

This lovely church with its beautiful stained glass windows was erected in 1864. The altar and pews are made of teak. It is open for Sunday services and the Parish welcomes all visitors.



8. Wallaroo Primary School 1861

The first school in Wallaroo was opened in 1861 and a number of other private schools operated until 1877. The present Wallaroo Public School main building was

built in 1877 at a cost of 4,455 pounds, including a headmaster's residence.



9. Residence of Caroline Carleton C1870

The residence at 20 Wildman Street was

originally a private school conducted by Amy Carleton during the early 1870s. Her mother Caroline Carleton lived in the house for a short time until her death on 10th July, 1874. She is buried in the Wallaroo Cemetery. Caroline Carleton wrote the words of "Song of Australia". A memorial to Caroline Carleton with the words of the song inscribed is located next to the Wallaroo Town Hall.



10. Rotunda - Davies Square 1927

The Rotunda was the scene of carol concerts every Christmas night during the mining era. Carols, known

locally as "curls", were one of the favourite forms of music. The Rotunda was also noted for its use by the Wallaroo Town Band for its many concerts. The Rotunda was originally built on land overlooking the Bay (near present silos) but relocated to Davies Square in 1927.